



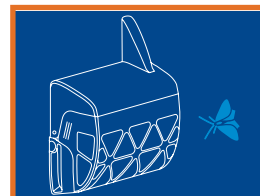
Pest-Pro Smart Sense

Smart Sense detects moths and cockroaches by sensing changes in temperature. The bugs are attracted by nontoxic pheromones and captured on a glue board. Any activity is automatically reported at an early stage.

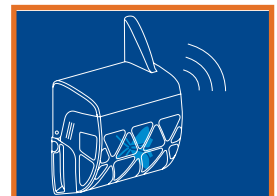
Smart Sense is a two-in-one trap that can be floor mounted for cockroaches and wall mounted for moth. It gives an early warning of infestation, and activity can be followed on our digital control center WisePlan. Smart Sense is part of the Smart Connect system and is fully compatible with existing installed Smart Connect systems.

Pest-Pro Smart

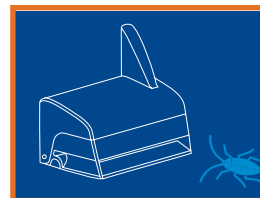
Pest-Pro Smart is an intelligent system that keeps an eye on things you don't want to see. By constantly monitoring and instantly reacting, it prevents costly infestations in an environmentally-friendly way. Add the services traditionally provided by us, and you will get a solution that gives you the best of two worlds – automation and expertise.



1 – A moth enters the trap and the sensor is activated.



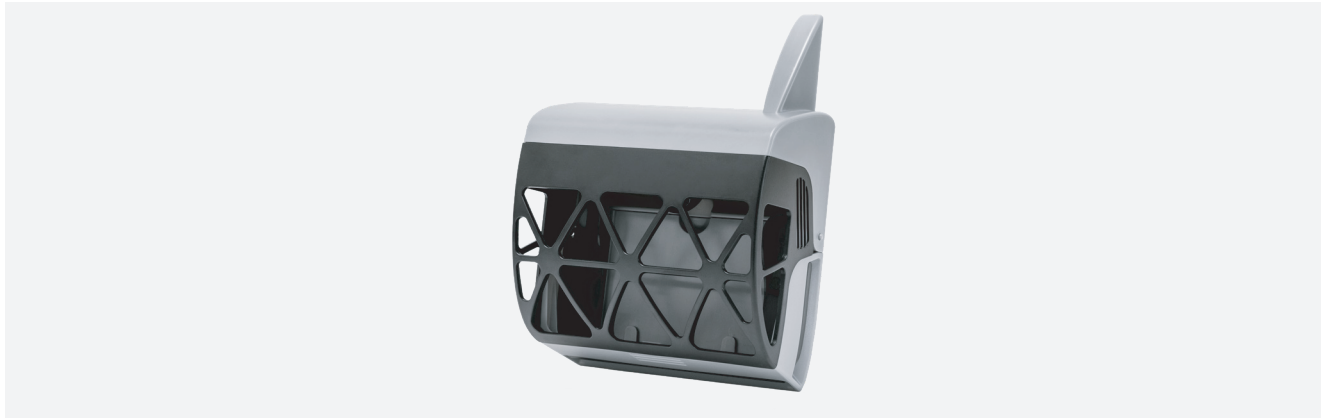
2 – The trap gives an early warning of infestation.



1 – A cockroach enters the trap and the sensor is activated.



2 –The trap gives an early warning of infestation.



Smart Sense

Controls	Electronic wireless control with 868 MHz (EU, SG) / 920 MHz (US, AUS, NZ & MY). Data transmission to Smart Connect.	
Installation	For indoor use only. Wall mounted for moth and floor mounted for cockroaches. Place Smart Sense in areas where the risk of moth or cockroaches are present.	
Power supply	AC/DC adapter. 100-240 V. Interchangeable plug choose between plug types: A (US), G (UK), I (AUS), C (EU)	
Plastic material	PP, PC and ABS	
IP classification	IP 44	
Dimensions	Moth: L 139 / W 70 / L 171 mm (L 5,5 / W 2,7 / L 6,7 in) Cockroach: L 139 / W 86 / H 109 mm (L 5,5 / W 3,4 / L 4,3 in)	
Weight	0,4 kg. (0,88lb)	
Equipment	Standard Phillips screwdriver and a drill with (concrete) drill Ø 5 mm (0,2 in).	
Article no.	400 200 - 868 MHz EU power plug (C) 400 200G - 868 MHz UK power plug (G)	400 201A - 920 MHz US Power Plug (A) 400 201G - 920 MHz UK Power Plug (G) 400 201I - 920 MHz AUS Power Plug (I)
Accessories	<p>Glue boards / glue pads Standard size: 78x60 mm (3,07x2,36 inch). Suggested suppliers: Silvanderson, Ratpack, Killgerm or Plastdiversity</p> <p>Pheromone Kairomone for all cockroaches AF Glue Pads (Ephestia and Plodia) - Pheromone specific for food moths: Indianmeal Moth Plodia interpunctella, Mediterranean Flour Moth Ephestia kuehniella, Tobacco Moth Ephestia elutella AF Glue Pads (Tineola bisselliella) - Pheromone specific for clothes moth: Webbing Clothes Moth Tineola bisselliella, Clothes Moth Tinea pellionella Suggested supplier: Killgerm (Manufacturer: Suterra, Mastertrap, or trecé)</p> <p>Note! Glue boards and pheromone must be purchased individually by each branch / country. AIC does not supply this.</p>	
Compliance	<p>See CE and FCC compliance statements and manuals on Smart Net.</p> <p>Note! FCC approved Smart Sense 920 MHz (Article no. 400 201) will be for sale from December 1, 2018.</p>	